

THE RETAILER'S CATALOGUE

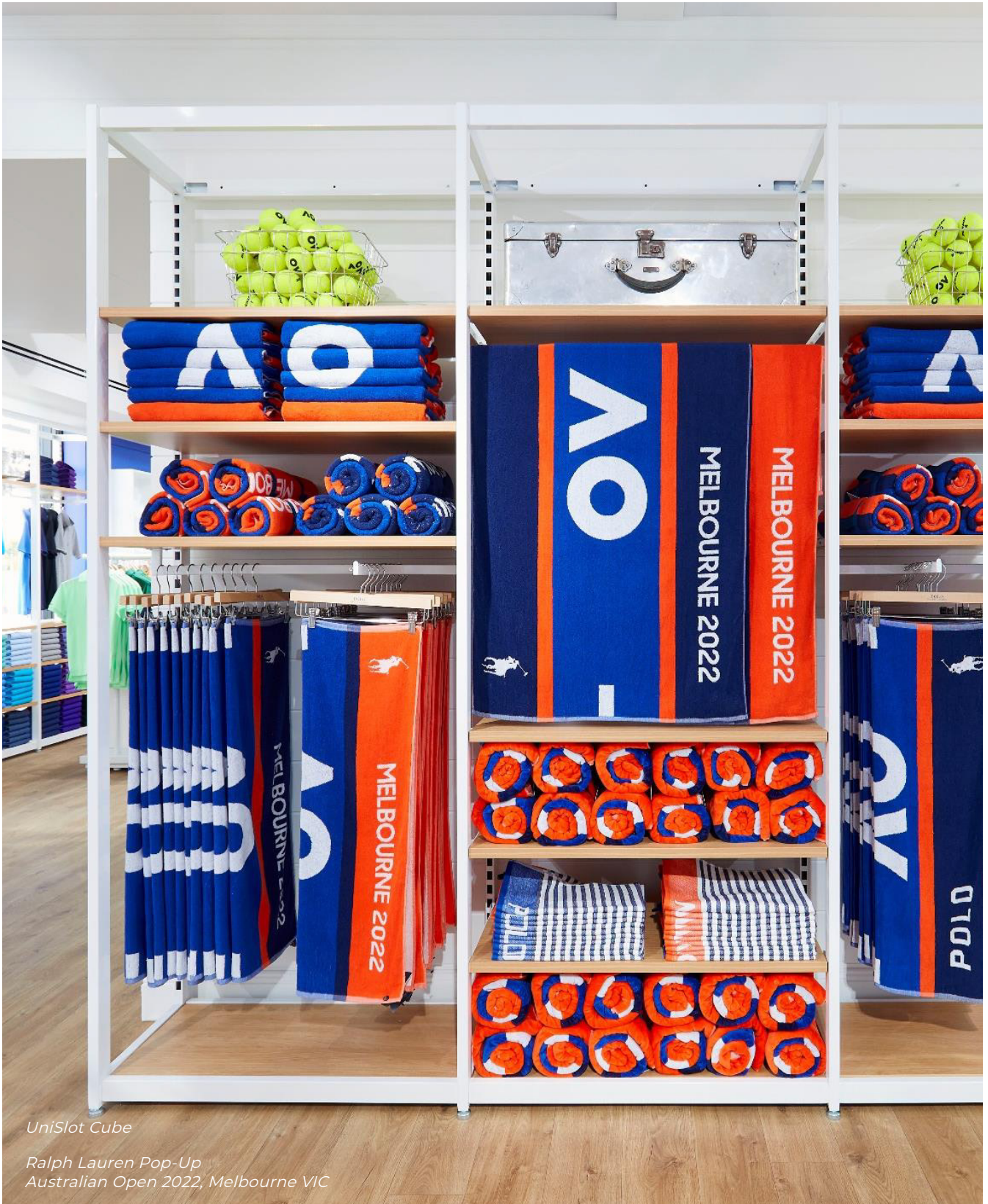
2023 Edition

MODULAR GONDOLA



UniSlot.TM

APEX
DISPLAY



UniSlot Cube

*Ralph Lauren Pop-Up
Australian Open 2022, Melbourne VIC*

Ralph Lauren
Australian Open - 2021, 2022 & 2023

As the Official Outfitter of the Australian Open since 2021, Ralph Lauren has partnered with Apex Display to design and supply the fixtures for their experiential retail pop-up stores. UniSlot Cube was selected due to its innovative design, versatility, and ease of install. The same metal fixtures have been used each year, whilst updating the timber accessories to suit the brand direction - a true testament to the timeless character of the UniSlot collection.

Hey, we're Apex Display!

We believe creating memorable shopping experiences is key to successful and sustainable brick 'n' mortar retail.

Together, we create retail stores that are authentic to your brand, functional for you, and memorable for your customers.

It's not just what we do - it's our passion.





Find out more about this UniSlot display on page 59

Why UniSlot?

One system, endless solutions

Modular and scalable + Customisable finishes +

Endless merchandising flexibility +

Innovative design + Fast and easy setup +

Australian Made + Robust construction +

Consistent high quality + Fast turnaround +

= **The ultimate display solution**

“

“The UniSlot system was so easy to install. Being modular, it allows for a range of easy adjustments that totally change the display look and finish. Highly recommend!”

Sam - We the Riders, Gold Coast QLD

UniSlot™

About Us

With over 50 years of experience in retail, Apex Display has become an industry leader in the supply of shop fittings, shop furniture and shop supplies.

Apex Display works with emerging and established retailers across Australia, from independent clothing, homewares and sports stores, to large chain stores.

Together, we design and furnish stores that are authentic to your brand, functional for you, and memorable for your customers. Our extensive product collection provides endless options to personalise and capture your brand's unique story.

As an Australian owned and operated family business, we are passionate about successful and sustainable retail stores. We are committed to delivering an unrivalled range with consistency in quality and service, keeping you ahead of the game.

Above all, we pride ourselves on fulfilling promises. We're fanatical about detail and go beyond expectations to make every experience easy.

We won't settle for status quo and are always striving to raise the bar. Don't just take our word for it - scan the QR code below to see what our customers are saying.





Design-focused and collaborative team



In-house manufacturing and customisation



Extensive range of off-the-shelf solutions



Family heritage, family owned and family values

Our Customers Say

"The team at Apex Display have been extremely helpful, friendly and professional in providing quality products. Fantastic customer service! Very happy with the end result. Would highly recommend!"

Suzanne - Ringers Western

"We were impressed by the level of service and attention to detail they offered. When the fittings were delivered, we found exactly what we had been promised: very high quality products that were much easier to assemble and much more durable than we had from other suppliers."

Sajat - Sportsmans Warehouse

"I just wanted to pass on some positive feedback on the level of service that everyone at Apex Display provides and constantly goes above and beyond irrespective of what time of the day it is. A very tailored, bespoke and personalised service which is rare in this day and age."

Sheldon - Billy J

"Wonderful company to deal with, easy transactions, fast delivery and very friendly staff. I 100% recommend Apex Display!"

Tania - Beaux Lady



UniSlot Cube

Bondi Active
Bondi, NSW

Design by McCartney Design

“

Working with Apex Display was great! They really helped guide us to the right system for our space. UniSlot is perfect for us – it's cost effective, easy to customise to suit varying merchandising needs, and most of all looks premium.”

Briony - Bondi Active

In-House Manufacturing

At Apex Display, quality is always front of mind. We're constantly investing in the most technologically advanced manufacturing systems to deliver you the standard of quality that is consistent with the great green and gold.

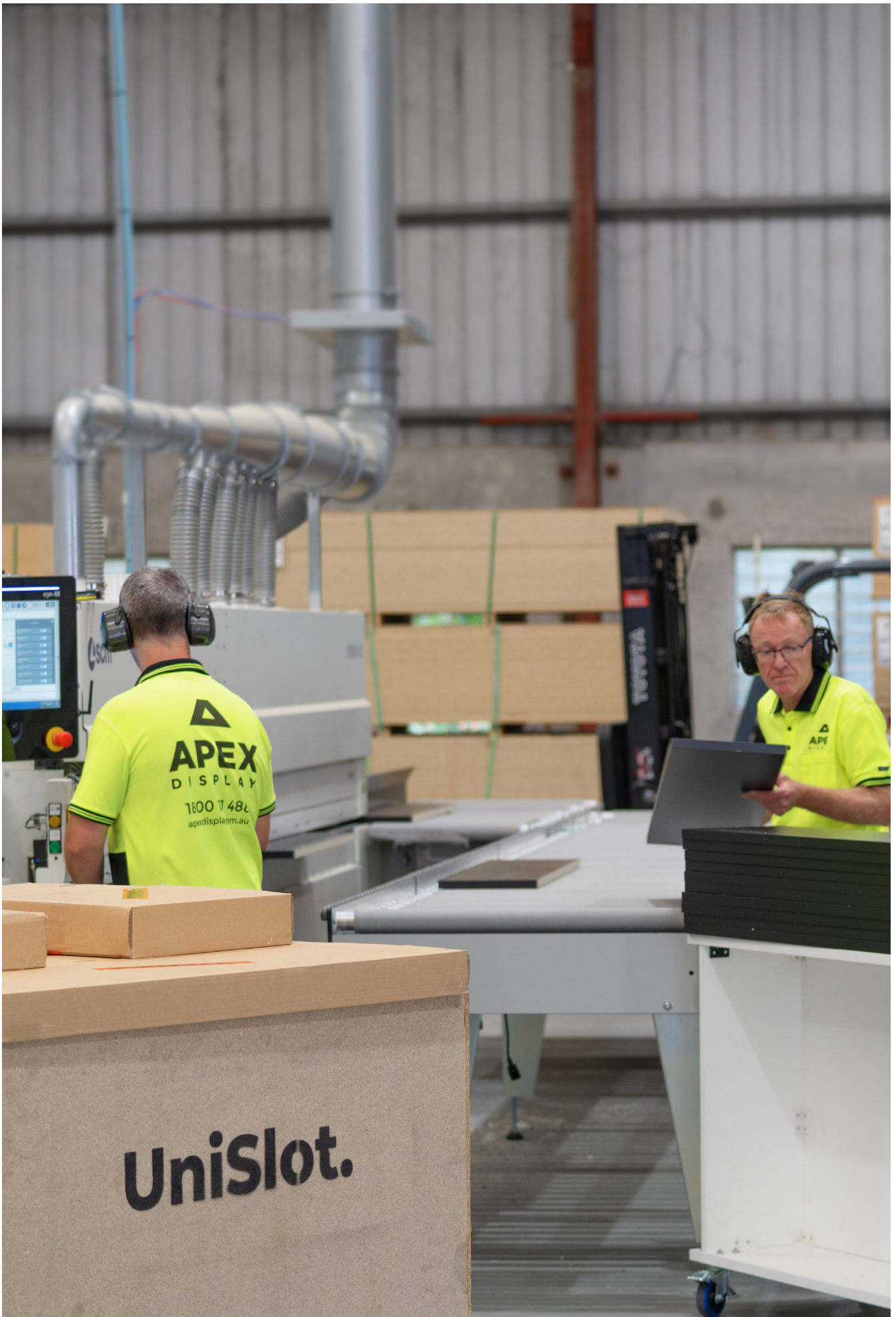
UniSlot timber components are produced at our Brisbane manufacturing facility. Besides giving us the flexibility to create new ideas, this enables us to deliver unparalleled quality with short lead times - delivering what you want, faster!

Apex Display also produces a selection of slatwall products, modular retail counters and shop furniture in-house. We're committed to growing the Australian Made range, so keep an eye out for new products.



“

"I do like that UniSlot is Australian Made. It makes the product more sustainable and it matches our Australian brand ethos."



Standard Finishes

We understand the impact that finishes have on the overall appearance of your store. That's why UniSlot and our Australian Made displays are available in a range of designer finishes to ensure that your store delivers impressive results.

UniSlot metal components

Satin Black, Pearl White and Bright Chrome



UniSlot timber components and Australian Made displays

Textured Black, Classic White and Native Oak



It doesn't stop there!

Do you want to stand out from the crowd? UniSlot and selected shop furniture products are available in a huge range of Premium Finishes from market-leading brands, including Laminex, Polytec and FlexiPanel.

Contact us today to find out more!



Premium Finishes

In the fast-paced, competitive retail environment, standing out from the crowd is more important than ever.

UniSlot timber components and our Australian Made shop furniture can be customised with selected finishes from market leading brands such as Laminex, Polytec and FlexiPanel.

Premium Finishes help craft an experience that is memorable for your customers and amplify the power of your brand. Talk to us today about taking your store displays to the next level!

“

“The team at Apex Display were awesome in helping us refit our showroom. Using a combination of off-the-shelf products and customised components to get a great look - highly recommend!”

Travis - RV Service Centre, Toowoomba QLD



Laminex[®] polytec FlexiPanel[®]

Store Design

Your store is your investment, so take the time to get the details right. Partnering with Apex Display early in the design process can save you countless hours, thousands of dollars and ensure the best possible outcome for your store.

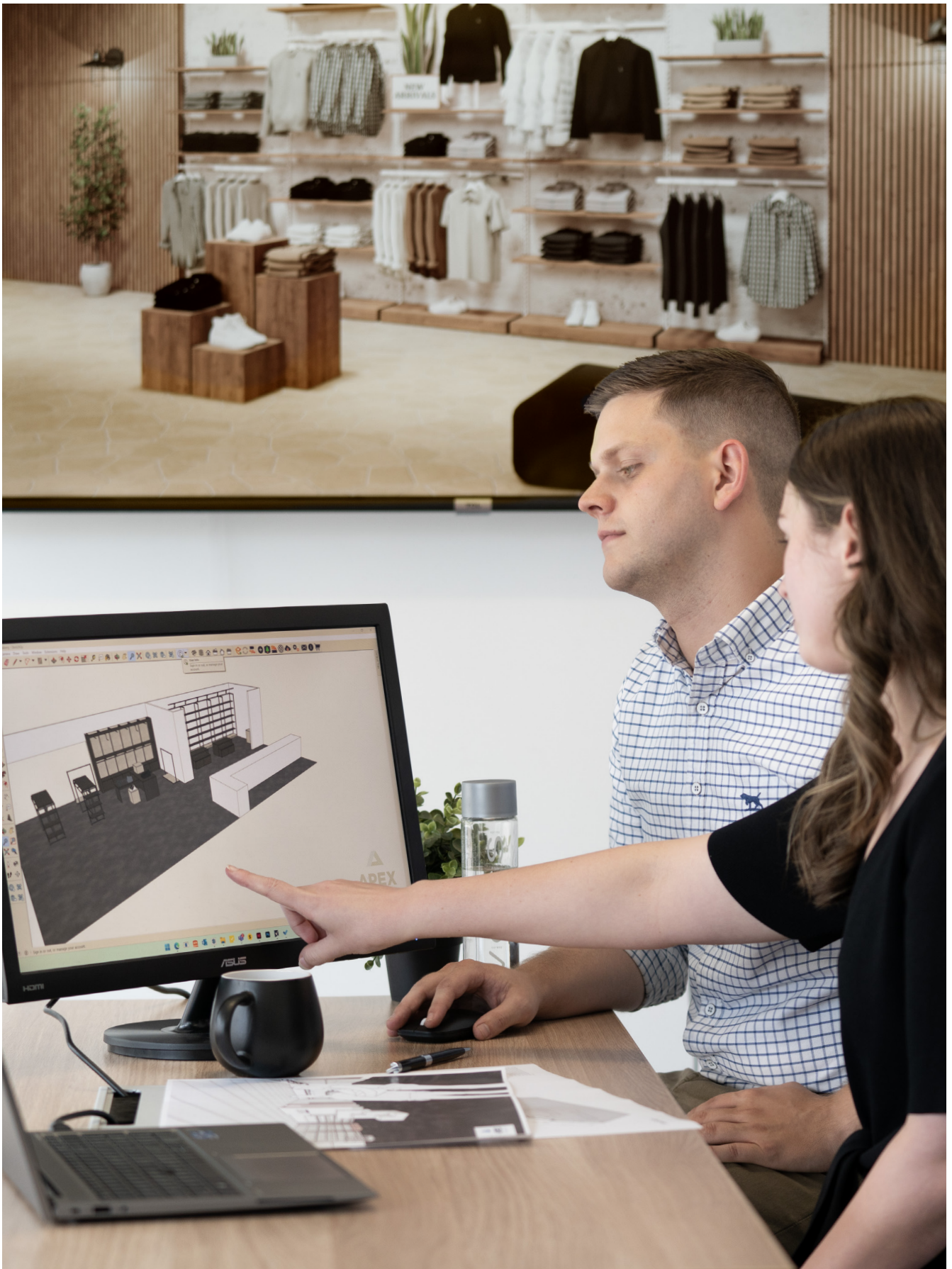
Our team of store design experts utilise advanced CAD modelling software to design and deliver practical store solutions. Incorporating our value-engineered shopfitting systems and shop furniture enables us to deliver the ultimate balance between aesthetics, needs and budget.

With over 50 years of retail knowledge and experience you can rest easy knowing the outcome will certainly be worth it.

Contact us today to begin your store design journey.

“

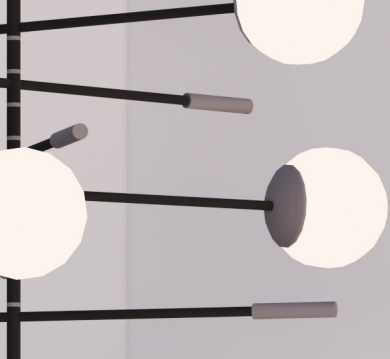
"Good fitouts increase the perceived value of your product. We've seen average sales rise by 30% after a new shop fitout."





Modular Gondola

UniSlot.™



BODY **HAIR CARE**

ARGAN 20% OFF





From
\$6,795

UniSlot Modular Gondola Apparel Concept

3 x 1200mm double-sided bays with 900mm end bays
Display size: 4530mm L x 932mm W x 1480mm H (+ signage)

White UniSlot fixtures contrasted with Laminex Seasoned Oak timber finishes evoke feelings of warmth and energy in this apparel display.

The versatile design of UniSlot Modular Gondola provides endless flexibility when it comes to merchandising your products. This display can be easily adapted to suit your brand, needs and budget.

Like what you see? Reach out to us today!



From
\$10,170

Adapt these
concepts to suit
your brand,
needs and
budget.

Contact us today!

UniSlot Modular Gondola Beauty Concept

2 x 900mm double-sided bays with 900mm end bays
Display size: 2690mm L x 932mm W x 1480mm H (+ signage)

Black UniSlot fixtures paired with Polytec Boston Oak timber finishes creates a stylish, modern and organic appeal in this beauty display. The custom grooved drawer fronts add a subtle touch of sophistication.

When it comes to product merchandising flexibility, UniSlot Modular Gondola's versatile design provides you with endless options. This display can be easily adapted to suit your brand, needs and budget.

Like what you see? Reach out to us today!

UniSlot.TM

UniSlot Modular Gondola

UniSlot Modular Gondola is a freestanding shopfitting solution designed to maximise centre-of-store floor space. The modular and scalable design makes it appropriate for a large variety of retail applications.

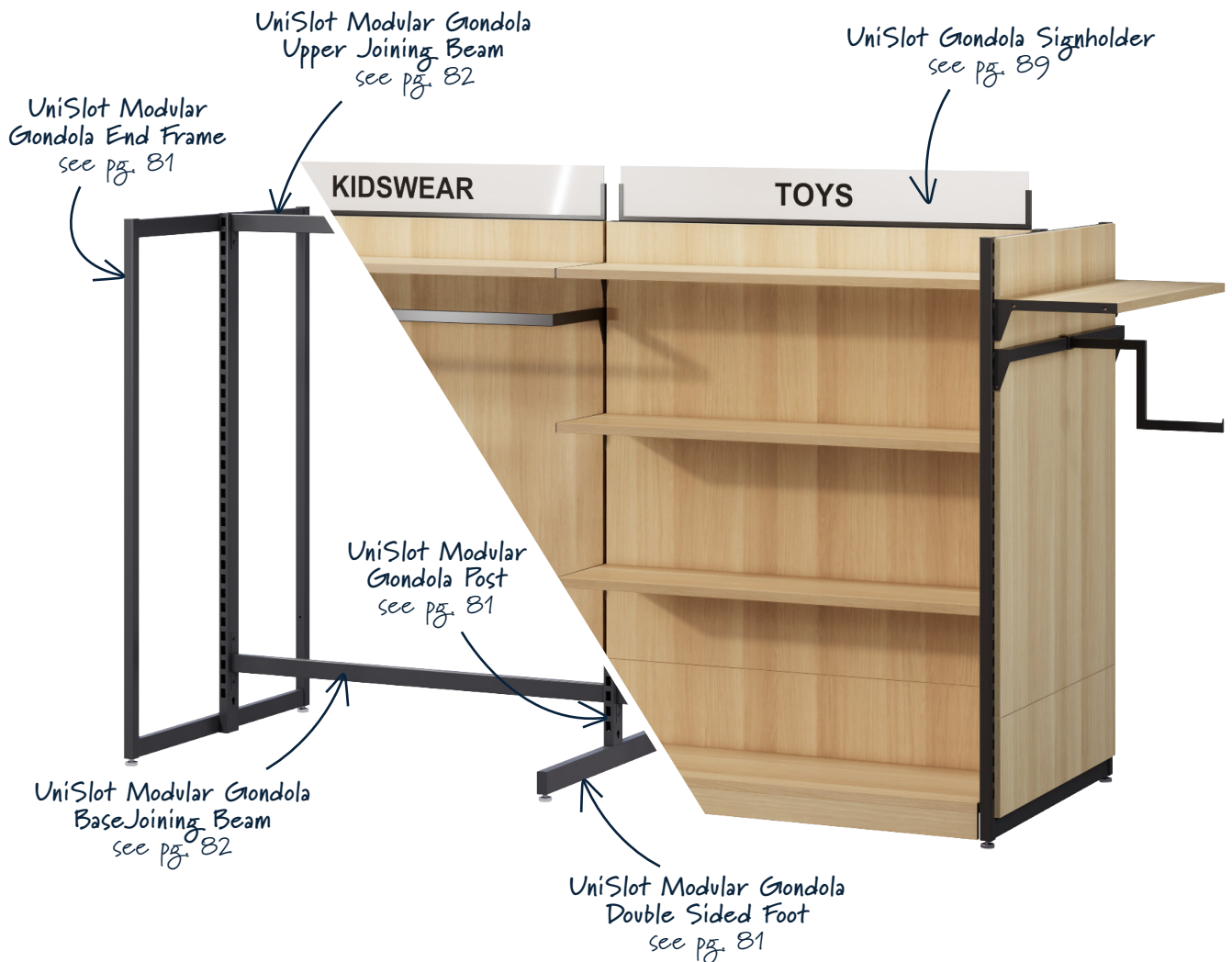
Benefits of UniSlot Modular Gondola

- Perfect for centre-of-store floor displays and pop-up retail
- Large range of interchangeable accessories
- Modular components allow you to adapt your display to changing seasons and product ranges
- Fast and easy assembly



Not sure where to start?


We're here to help. Discuss your shopfitting requirements with one of our friendly consultants and we'll guide you to the system that's right for your store.



UniSlot Modular Gondola End Frame

900 W x 1480mm H

Modular Gondola End Frames require Modular Gondola Joining Beams (page 82) to create a freestanding gondola. Modular Gondola Posts and Feet are required to create multi-bay gondolas (see below).


Finish	Qty	SU2143	
Black/White	1-9	\$190.00	
	10+	\$175.00	

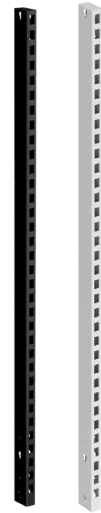


UniSlot Modular Gondola Post

1480mm H (including Modular Gondola Foot)

Modular Gondola Posts require Modular Gondola Double Sided Feet (see below) to create multi-bay freestanding gondola displays.


Finish	Qty	SU0638	
Black/White	1-9	\$41.00	
	10+	\$38.00	



UniSlot Modular Gondola Double Sided Foot

860mm D

Use with Modular Gondola Post (see above) and Modular Gondola Joining Beams (page 82) to create a freestanding gondola display.

Finish	Qty	SU1226	
Black/White	1-9	\$48.00	
	10+	\$43.50	





UniSlot Modular Gondola Upper Joining Beam

Use with Modular Gondola End Frames, Posts and Feet (page 81) and Modular Gondola Base Joining Beams (see below) to create a freestanding gondola display.

1 Upper Joining Beam is required per bay.

Finish	Qty	600mm SU0821	900mm SU0827	1200mm SU0833	
Black/White	1-9 10+	\$24.00 \$21.50	\$29.00 \$26.50	\$34.00 \$31.00	<input checked="" type="radio"/> BK <input type="radio"/> WH



UniSlot Modular Gondola Base Joining Beam

Use with Modular Gondola End Frames, Posts and Feet (page 81) and Modular Gondola Upper Joining Beams (see above) to create a freestanding gondola display.

1 Base Joining Beam is required per bay.

Finish	Qty	600mm SU0921	900mm SU0927	1200mm SU0933	
Black/White	1-9 10+	\$29.00 \$26.00	\$34.00 \$31.00	\$39.00 \$35.50	<input checked="" type="radio"/> BK <input type="radio"/> WH



UniSlot Modular Gondolas

Wild Earth
Brisbane, QLD

UniSlot 290mm Shelf

UniSlot 290mm Shelves require UniSlot 290mm Shelf Bracket Sets (see below). Integrated LED lighting available - contact us for more information.

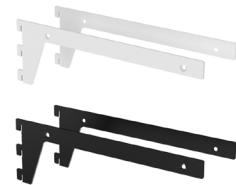
Finish	Qty	600mm SU6521	900mm SU6527	1200mm SU6533	
White	1-9	\$40.00	\$50.00	\$54.00	WH
	10+	\$36.00	\$45.00	\$49.50	
Black/ Native Oak	1-9	\$45.00	\$56.00	\$62.00	BK NO
	10+	\$41.00	\$51.00	\$57.00	
Premium Finishes	Create your unique look with Premium Finishes. Visit apexdisplay.com.au/premium				



UniSlot 290mm Shelf Bracket Set

Shelf bracket set for UniSlot 290mm Shelf (see above). Set includes left and right bracket and screws.

Finish	Qty	SU6415	
Black/ White	1-19	\$14.00	BK WH
	20+	\$13.20	



UniSlot 390mm Shelf

UniSlot 390mm Shelves require UniSlot 390mm Shelf Bracket Sets (see below). Integrated LED lighting available - contact us for more information.

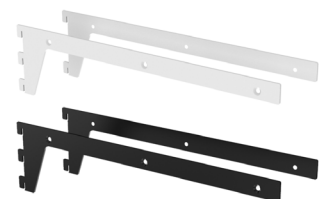
Finish	Qty	600mm SU6621	900mm SU6627	1200mm SU6633	
White	1-9	\$56.00	\$62.00	\$67.00	WH
	10+	\$50.00	\$56.00	\$61.00	
Black/ Native Oak	1-9	\$65.00	\$73.00	\$81.00	BK NO
	10+	\$58.50	\$66.00	\$74.00	
Premium Finishes	Create your unique look with Premium Finishes. Visit apexdisplay.com.au/premium				



UniSlot 390mm Shelf Bracket Set

Shelf bracket set for UniSlot 390mm Shelf (see above). Set includes left and right bracket and screws.

Finish	Qty	SU6417	
Black/ White	1-19	\$15.50	BK WH
	20+	\$14.70	



UniSlot Modular Gondola Drawer

400mm D x 400mm H

The Modular Gondola Drawer is supplied fully assembled. Drawers are push-to-open for ease of use. Requires a UniSlot Skirt and UniSlot Drawer Mount Bracket Set (see below).



600mm unit has one drawer. 900mm & 1200mm units have two drawers.

Finish	Qty	600mm SU8221	900mm SU8227	1200mm SU8233	
White	1-4	\$280.00	\$390.00	\$495.00	WH
	5+	\$265.00	\$370.00	\$460.00	
Black/ Native Oak	1-4	\$320.00	\$450.00	\$560.00	BK NO
	5+	\$300.00	\$425.00	\$520.00	
Premium Finishes	Create your unique look with Premium Finishes. Visit apexdisplay.com.au/premium				

UniSlot Skirt

The UniSlot Skirt attaches to the bottom of Modular Gondola Drawer (see above) to cover the front of the Modular Gondola Feet.



Finish	Qty	600mm SU7021	900mm SU7027	1200mm SU7033	
White	1-9	\$20.00	\$25.00	\$29.00	WH
	10+	\$18.50	\$23.50	\$26.50	
Black/ Native Oak	1-9	\$22.00	\$28.00	\$34.00	BK NO
	10+	\$20.50	\$26.00	\$31.50	
Premium Finishes	Create your unique apex look with Premium Finishes. Visit apexdisplay.com.au/premium				



UniSlot Modular Gondola Drawer Bracket Set

Bracket set for Modular Gondola Drawer (see above). Set includes left and right bracket and screws.

Finish	Qty	SU9117	
Black/ White	1-4	\$26.00	BK WH
	5+	\$23.50	

UniSlot 390mm Base Shelf

UniSlot 390mm Base Shelves require UniSlot Skirts and UniSlot 390mm Base Shelf Bracket Sets (see below).

Finish	Qty	600mm SU6921	900mm SU6927	1200mm SU6933	
White	1-9	\$57.00	\$63.50	\$69.00	WH
	10+	\$51.50	\$57.50	\$63.00	
Black/ Native Oak	1-9	\$66.00	\$74.50	\$82.00	BK NO
	10+	\$59.00	\$67.50	\$75.00	
Premium Finishes	Create your unique look with Premium Finishes. Visit apexdisplay.com.au/premium				



UniSlot Skirt

The UniSlot Skirt attaches to the bottom of the UniSlot Base Shelf (see above) to cover the front of the Modular Gondola Feet.

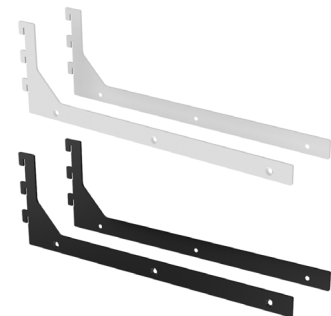
Finish	Qty	600mm SU7021	900mm SU7027	1200mm SU7033	
White	1-9	\$20.00	\$25.00	\$29.00	WH
	10+	\$18.50	\$23.50	\$26.50	
Black/ Native Oak	1-9	\$22.00	\$28.00	\$34.00	BK NO
	10+	\$20.50	\$26.00	\$31.50	
Premium Finishes	Create your unique look with Premium Finishes. Visit apexdisplay.com.au/premium				



UniSlot 390mm Base Shelf Bracket Set

Shelf bracket set for UniSlot 390mm Base Shelf (see above). Set includes left and right bracket and screws.

Finish	Qty	SU6317	
Black/ White	1-19	\$15.50	BK WH
	20+	\$15.10	



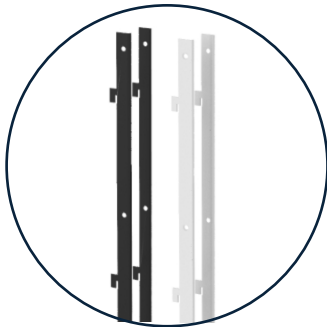


UniSlot 1160mm H Slatwall Panel

UniSlot 1160mm H Slatwall Panels require UniSlot 1160mm H Slatwall Panel Bracket Sets (see below). Supplied with standard aluminium inserts. Black aluminium inserts are available on request.

UniSlot Slatwall Panels accept most slatwall accessories (see pages 111-115).

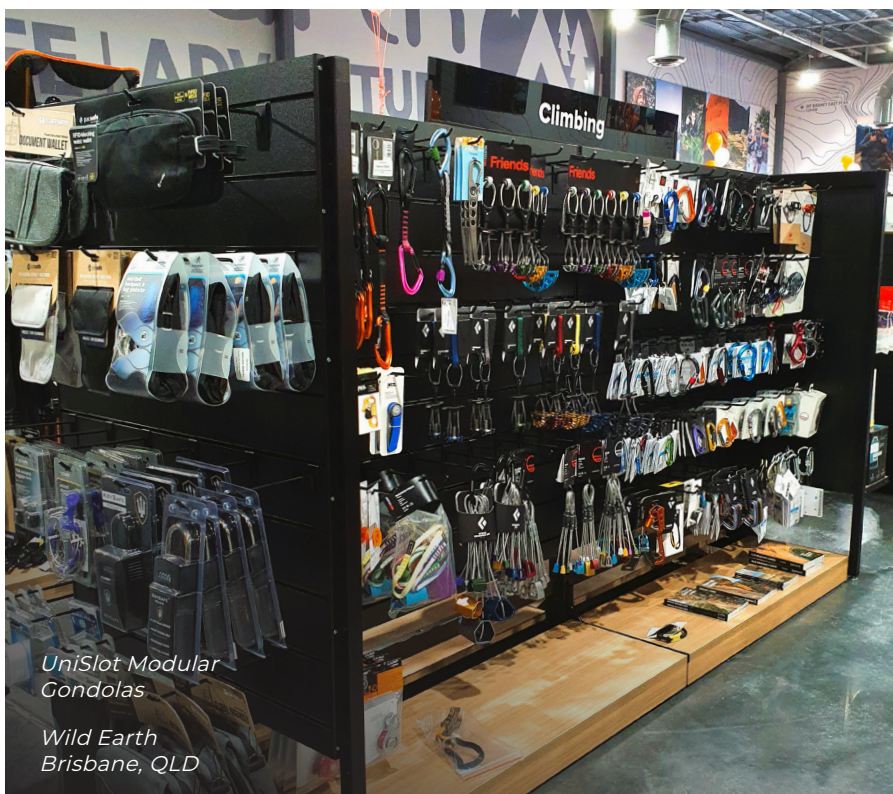
Finish	Qty	600mm SU5321	900mm SU5327	1200mm SU5333	
White	1-9	\$106.00	\$162.00	\$174.00	WH
	10+	\$98.00	\$150.00	\$161.00	
Black/ Native Oak	1-9	\$118.00	\$190.00	\$196.00	BK NO
	10+	\$108.00	\$175.00	\$181.00	
Premium Finishes	Create your unique look with Premium Finishes. Visit apexdisplay.com.au/premium				



UniSlot 1160mm H Slatwall Panel Bracket Set

Bracket set for UniSlot 1160mm H Slatwall Panel (see above). Set includes left and right bracket and screws.

Finish	Qty	SU5232	
Black/ White	1-19	\$24.00	BK WH
	20+	\$22.50	



UniSlot Modular Gondolas

Wild Earth
Brisbane, QLD



UniSlot 240mm H Accent Panel (Side-Mount)

UniSlot 240mm H Accent Panels (Side-Mount) require UniSlot 240mm H Side Mount Panel Bracket Sets (see below).

Finish	Qty	600mm SU5421	900mm SU5427	1200mm SU5433	
White	1-9	\$23.00	\$35.00	\$38.00	WH
	10+	\$21.50	\$32.50	\$35.00	
Black/ Native Oak	1-9	\$27.00	\$41.00	\$45.00	BK NO
	10+	\$25.00	\$38.00	\$41.50	
Premium Finishes	Create your unique look with Premium Finishes. Visit apexdisplay.com.au/premium				



UniSlot 240mm H Side-Mount Panel Bracket Set

Bracket set for UniSlot 240mm H Accent Panel (Side-Mount) (see above). Set includes left and right bracket and screws.

Finish	Qty	SU5213	
Black/ White	1-19	\$10.00	BK WH
	20+	\$9.10	



Modular Gondola bays require 1 x 1160mm H and 1 x 240mm H panel to fill out the display. Alternatively, to create an economical visual barrier between both sides of the gondola unit use a Modular Gondola Drop-In Accent Panel. The panel fills the space between the Modular Gondola Joining Beams. Refer to page 89.





UniSlot 1160mm H Accent Panel

UniSlot 1160mm H Accent Panels require 6 UniSlot Accent Panel Brackets per panel (see below).

Finish	Qty	600mm SU5821	900mm SU5827	1200mm SU5833	
White	1-9	\$75.00	\$130.00	\$135.00	
	10+	\$68.50	\$118.00	\$123.00	
Black/ Native Oak	1-9	\$86.00	\$146.00	\$156.00	 
	10+	\$79.00	\$134.00	\$143.00	
Premium Finishes	Create your unique look with Premium Finishes. Visit apexdisplay.com.au/premium				

UniSlot 240mm H Accent Panel (Rear-Mount)



UniSlot 240mm H Accent Panels require 2 UniSlot Accent Panel Brackets per panel (see below).

Finish	Qty	600mm SU5921	900mm SU5927	1200mm SU5933	
White	1-9	\$23.00	\$35.00	\$38.00	
	10+	\$21.50	\$32.50	\$35.00	
Black/ Native Oak	1-9	\$27.00	\$41.00	\$45.00	 
	10+	\$25.00	\$38.00	\$41.50	
Premium Finishes	Create your unique look with Premium Finishes. Visit apexdisplay.com.au/premium				

UniSlot Accent Panel Bracket

Brackets for UniSlot Accent Panels (see above). 6 brackets are required for 1160mm H panels and 2 brackets are required for 240mm H panels.



Finish	Qty	SU5607	
Black/ White	1-99	\$2.50	 
	100+	\$2.30	

Modular Gondola bays require 1 x 1160mm H and 1 x 240mm H panel to fill out the display. Alternatively, to create an economical visual barrier between both sides of the gondola unit use a Modular Gondola Drop-In Accent Panel. The panel fills the space between the Modular Gondola Joining Beams. Refer to page 89.

UniSlot Modular Gondola Drop-In Accent Panel

Modular Gondola Drop-In Accent Panels require Modular Gondola Drop-In Panel Mounting Sets (see below).

Note: These Drop-In Accent Panels are not designed to fit the Modular Gondola End Frame.

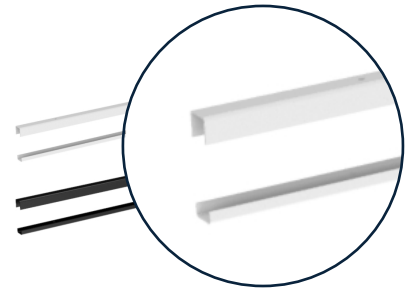
Finish	Qty	600mm SU2521	900mm SU2527	1200mm SU2533	
White	1-9	\$65.00	\$95.00	\$100.00	WH
	10+	\$60.00	\$88.00	\$93.00	
Black/ Native Oak	1-9	\$90.00	\$145.00	\$150.00	BK NO
	10+	\$83.00	\$133.00	\$139.00	
Premium Finishes	Create your unique look with Premium Finishes. Visit apexdisplay.com.au/premium				



UniSlot Modular Gondola Drop-In Panel Mounting Set

Modular Gondola Drop-In Panel Mounting Set for Modular Gondola Drop-In Accent Panel (see above). Bolts included for attaching to Modular Gondola Joining Beams.

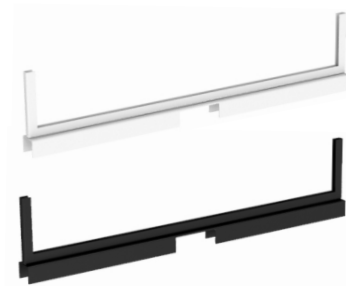
Finish	Qty	600mm SU2421	900mm SU2427	1200mm SU2433	
Black/ White	1-9	\$18.00	\$24.00	\$30.00	BK WH
	10+	\$16.20	\$22.00	\$27.50	

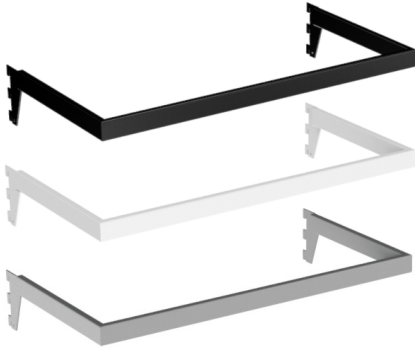


UniSlot Gondola Signholder

Fits over UniSlot Upper Joining Beams or the top rail of H-Frame Gondolas (page 96) for an effective signage solution. Suits signage up to 7mm thick.

Finish	Qty	600mm SU2821	900mm SU2827	1200mm SU2833	
Black/ White	1-4	\$25.00	\$30.00	\$35.00	BK WH
	5+	\$22.50	\$27.00	\$32.50	

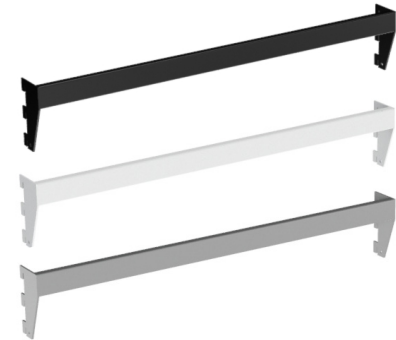




UniSlot Hangrail

Attaches to UniSlot posts for side hanging of clothing and accessories.

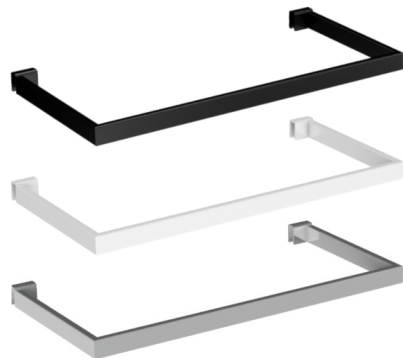
Finish	Qty	600mm SU3021	900mm SU3027	1200mm SU3033		
Black/ White	1-9	\$35.00	\$38.00	\$41.00	<input checked="" type="radio"/> BK	<input type="radio"/> WH
	10+	\$31.00	\$34.00	\$37.00		
Chrome	1-9	\$47.00	\$52.00	\$57.00	<input type="radio"/> CH	
	10+	\$42.00	\$47.00	\$51.00		



UniSlot Crossbar

Attaches to UniSlot posts. Use with face-out arms or display hooks for front hanging, or with the UniSlot Hangrail Attachment for side hanging.

Finish	Qty	600mm SU3621	900mm SU3627	1200mm SU3633		
Black/ White	1-9	\$25.00	\$28.00	\$30.00	<input checked="" type="radio"/> BK	<input type="radio"/> WH
	10+	\$22.00	\$25.00	\$27.00		
Chrome	1-9	\$30.00	\$34.00	\$38.00	<input type="radio"/> CH	
	10+	\$26.50	\$30.50	\$34.00		



UniSlot Hangrail Attachment

Attaches to the UniSlot Crossbar to enable a combination of front and side hanging of clothing and accessories.

Finish	Qty	594mm SU3221		
Black/ White	1-9	\$28.00	<input checked="" type="radio"/> BK	<input type="radio"/> WH
	10+	\$25.50		
Chrome	1-9	\$36.00	<input type="radio"/> CH	
	10+	\$33.00		



UniSlot Straight Arm

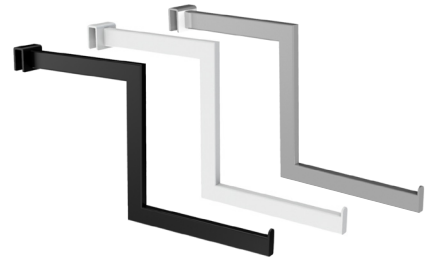
Attaches to the UniSlot Crossbar for front hanging of clothing and accessories.

Finish	Qty	300mm SU4015	400mm SU4017		
Black/ White	1-24	\$14.00	\$15.00	<input checked="" type="radio"/> BK	<input type="radio"/> WH
	25+	\$12.40	\$13.40		
Chrome	1-24	\$17.00	\$18.00	<input type="radio"/> CH	
	25+	\$15.10	\$16.10		

UniSlot Stepped Arm

Attaches to the UniSlot Crossbar for front hanging of clothing and accessories.

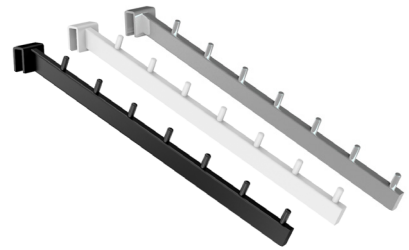
Finish	Qty	400mm SU4217		
Black/ White	1-24	\$16.00	BK	WH
	25+	\$14.80		
Chrome	1-24	\$20.00	CH	
	25+	\$18.50		



UniSlot 7 Pin Sloping Arm

Attaches to the UniSlot Crossbar for front hanging of clothing and accessories.

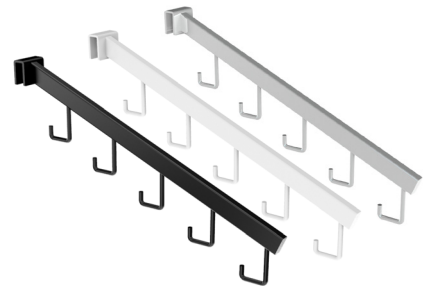
Finish	Qty	400mm SU4116		
Black/ White	1-24	\$16.00	BK	WH
	25+	\$14.40		
Chrome	1-24	\$20.00	CH	
	25+	\$18.00		



UniSlot 5 Hook Sloping Arm

Attaches to the UniSlot Crossbar for front hanging. Ideal for bags or accessories with handles as it enables individual items to be removed easily.

Finish	Qty	400mm SU4316		
Black/ White	1-24	\$16.00	BK	WH
	25+	\$14.50		
Chrome	1-24	\$20.00	CH	
	25+	\$18.00		



UniSlot Display Hook

Attaches to the UniSlot Crossbar to hang small accessories.

Finish	Qty	100mm SU4907	150mm SU4909	200mm SU4911	250mm SU4913		
Black/ White	1-99	\$1.90	\$2.10	\$2.30	\$2.50	BK	WH
	100+	\$1.60	\$1.75	\$1.90	\$2.05		
Chrome	1-99	\$2.90	\$3.10	\$3.30	\$3.50	CH	
	100+	\$2.40	\$2.60	\$2.75	\$2.90		



Prices displayed in this catalogue are correct at time of printing and are subject to change without notice. All prices exclude GST & delivery. E & OE. Please refer to our website apexdisplay.com.au for our most up-to-date pricing, lead times and policies.



Follow us on social media



Visit our showroom

Our display centre is open from 8:00am to 4:30pm Monday to Thursday and 8:00am to 3:00pm Friday.

43 Proprietary Street, Tingalpa QLD 4173

Terms and Conditions

Order Methods

You can order with Apex Display instore, online, via email or over the phone. If you have any special delivery instructions or a Purchase Order number, please let us know when placing your order. **The minimum order value for orders to be dispatched is \$100, excluding freight and GST.**

Payment Methods

We accept payment by Visa or Mastercard, direct bank transfer, and 30 day EOM account for approved account holders. For non account holders, orders must be paid for in full before dispatch. Payment receipts or remittance advices are not sufficient evidence that funds have cleared into our account. Orders involving in-house manufactured items require a deposit prior to production of your order (see below).

In-House Manufactured Products

Orders including in-house manufactured products require a deposit payment to secure your order in the production queue. The deposit value will be discussed during our proposal to you. We are unable to offer exchanges, refunds or credits for change-of-mind returns on customised products.

Order-In Product Lines

Order-in product lines must be paid for in full before we can process your order.

Shipping

In stock orders placed before 12pm are shipped the same day. We ship through our nationwide network of reputable carriers. Please advise any special instructions on your order. Shipping times provided are an estimate only from our network of carriers - we cannot guarantee these as they are outside of our control.

Shipping of Large Orders

Delivery of large orders such as pallets, crates or long items to small retail stores and shopping centres can often be a challenge and as such may incur additional shipping charges. In instances where delivery is difficult due to circumstances outside of our control, we will endeavour to notify you of this as soon as possible and work with you to arrange an alternative solution. Please assist us with any specific details such as opening times, forklift availability and contact details to ensure your order is delivered safely and as soon as possible.

Order Collection

Orders can be collected from our warehouse at Unit 2, 19 Proprietary Street, Tingalpa. We will inform you as soon as your order is ready for collection. You can organise your own courier to collect your order at your responsibility.

Damage In Transit

Ensure you check the condition of your goods on delivery. If you suspect the goods are damaged, either refuse the delivery or sign for them as STC (subject to checking). Please contact us immediately with photos of any damage.

Returns

Items that are defective or damaged can be returned at no further expense to yourself, as long as it is claimed within 7 days of receipt.

If you change your mind or incorrectly order goods, we will provide a refund less a handling fee of 20% of the order value, as long as it is within 7 days of receipt. You must arrange return shipping at your own expense, and all items must be returned in original packaging and condition.

Please note order-in product lines, custom items (including Premium Finishes) and clearance items are non-refundable.

Quality Guarantee

We're confident in bringing you the highest quality products and service every day. Contact us if you are not completely satisfied with your purchase or if you feel your experience with us was less than perfect. We'll ensure your enquiry is resolved promptly.

Pricing

All prices displayed in this catalogue are correct at time of printing and are subject to change without notice. All prices exclude GST & delivery. E & OE.

Up-to-date pricing, lead times and our full terms and conditions can be found online at apexdisplay.com.au.



NEW
ARRIVALS

Make lasting impressions with UniSlot.



Contact Us

1800 111 488

apexdisplay.com.au

sales@apexdisplay.com.au

Showroom

43 Proprietary Street

Tingalpa, QLD 4173

